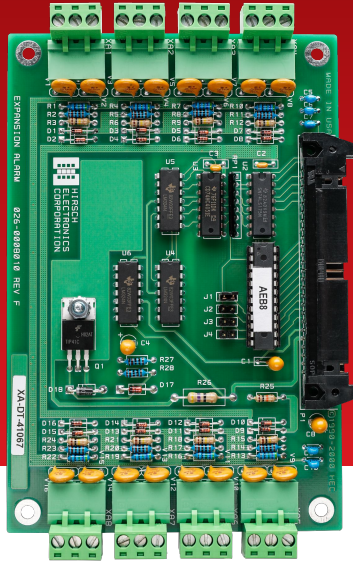


Alarm Expansion Board with Eight (8) Additional Line Model Inputs (AEB8)



Hirsch's Alarm Expansion Board (AEB8) expands the line module input capacity of a controller. AEB8 provides an additional eight (8) line module inputs per board.

The Alarm Expansion line module inputs are used for a variety of security monitoring functions in an access control application.

The AEB8 has four (4) address jumpers, and a range of eight (8) addresses. This addressing scheme enables up to four (4) AEB8s to reside on one controller.

The AEB8 can be used to monitor motion detectors, perimeter doors and windows, Request-to-Exit (RQE) and tamper inputs. These conditions are typically considered attempts to breach the security of a system and are therefore monitored and reported on an input-by-input basis at all times for enabled inputs.

Modular

- Up to 32 expansion inputs (intrusion detection, fire doors, windows)
- Add up to 4 AEB8 per controller

High Performance

- Less than two (2) second response time with contact, tamper, motion, and line supervision

Simple

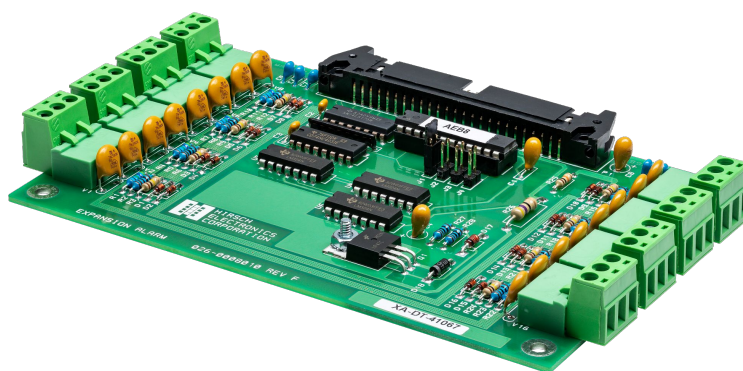
- Use with any Hirsch end-of-line module (MELM 1, 2, or 3)

Use Cases

- Attach to interior motion detectors, perimeter doors and windows
- Request to exit
- Tamper inputs

Specifications

Communications	
Wiring from Controller	EBIC5
Supervision	± 2% with MELM 3
Physical	
Alarm	Physical tamper on panel enclosure
Dimensions	6.85 x 4.05 x .52 in (17.4 x 10.3 x 1.32 cm)
Shipping Weight	1 lb (0.45 kg)
Operating Temperature Range	32° to 140°F (0° to 60°C)
Relative Humidity	0 to 90%, non-condensing
Listings and Approvals	<ul style="list-style-type: none"> • UL-294, UL-1076 • CE



Please contact your Hirsch regional manager to arrange for a web discussion and demo by calling +1-888-809-8880, emailing sales@hirschsecure.com, or visiting hirschsecure.com.