

Hirsch Velocity

Security Management System



Hirsch Velocity is an all-in-one software platform designed to manage access control and security operations across a wide range of facilities. From securing individual high-risk rooms to managing multi-building, multi-location campuses, Velocity has it all covered.

Full-Spectrum Access Control

With real-time capabilities, Velocity enables you to control doors, gates, turnstiles, elevators, and more. Monitor user movements, prevent unauthorized access, maintain compliance standards, and generate a comprehensive audit trail seamlessly.

Latest Software Upgrade: Velocity 3.8

The most recent iteration, Hirsch Velocity 3.8, delivers unprecedented security and interoperability, along with enhanced scalability. Fully compatible with Hirsch's latest Mx Controller hardware, it also supports the most recent versions of Microsoft Windows, SQL Server, and the latest network encryption protocol (TLS).

Real-Time Control

- Instant access control via mobile or fixed devices, enhanced by the Velocity Web Services Console

Award-Winning, Robust Security

- Maintains its acclaimed architecture while adding performance enhancements

Latest Compatibility

- Full integration with the latest Hirsch Mx Controller and updated software environments, including Windows and SQL Server

User-Friendly

- Features a modular UI supported by tutorials, making transitions easier for both new and experienced users

On-the-Go Management with Web Services Console

Administrators and security personnel can access real-time system information and control functionality on almost any device. This mobility feature makes it easier to manage your facility's security from anywhere.

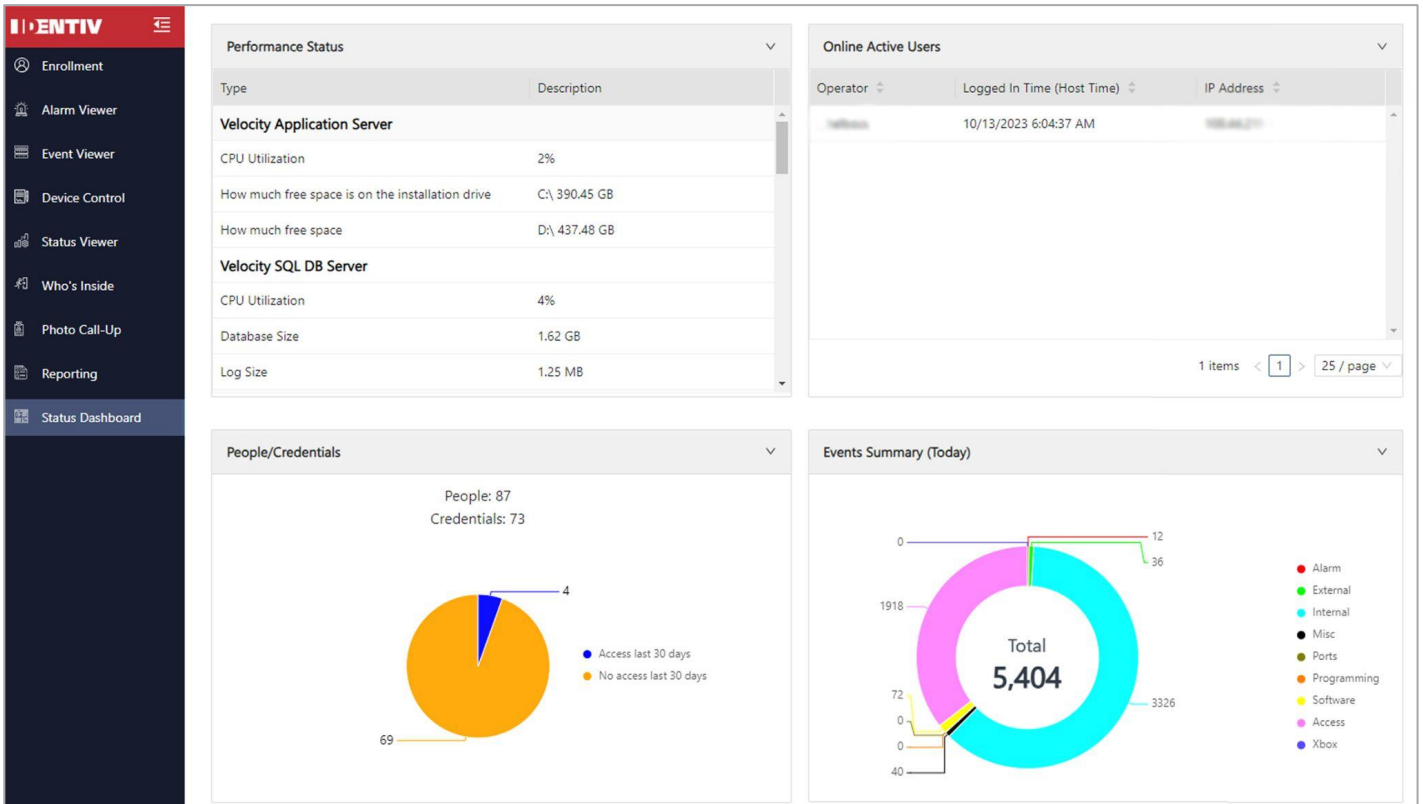


Figure 1: Velocity Web Services Operator Console

Built Hirsch Tough

Velocity 3.8 continues the Hirsch legacy of robust, award-winning architecture and user-friendly design. Existing users will find the transition to the new version seamless, thanks to its modular user interface. New users can quickly get up to speed with the help of extensive tutorials and help files. Performance enhancements provide faster access to administrative features, such as animated floor plans and alarm monitoring.

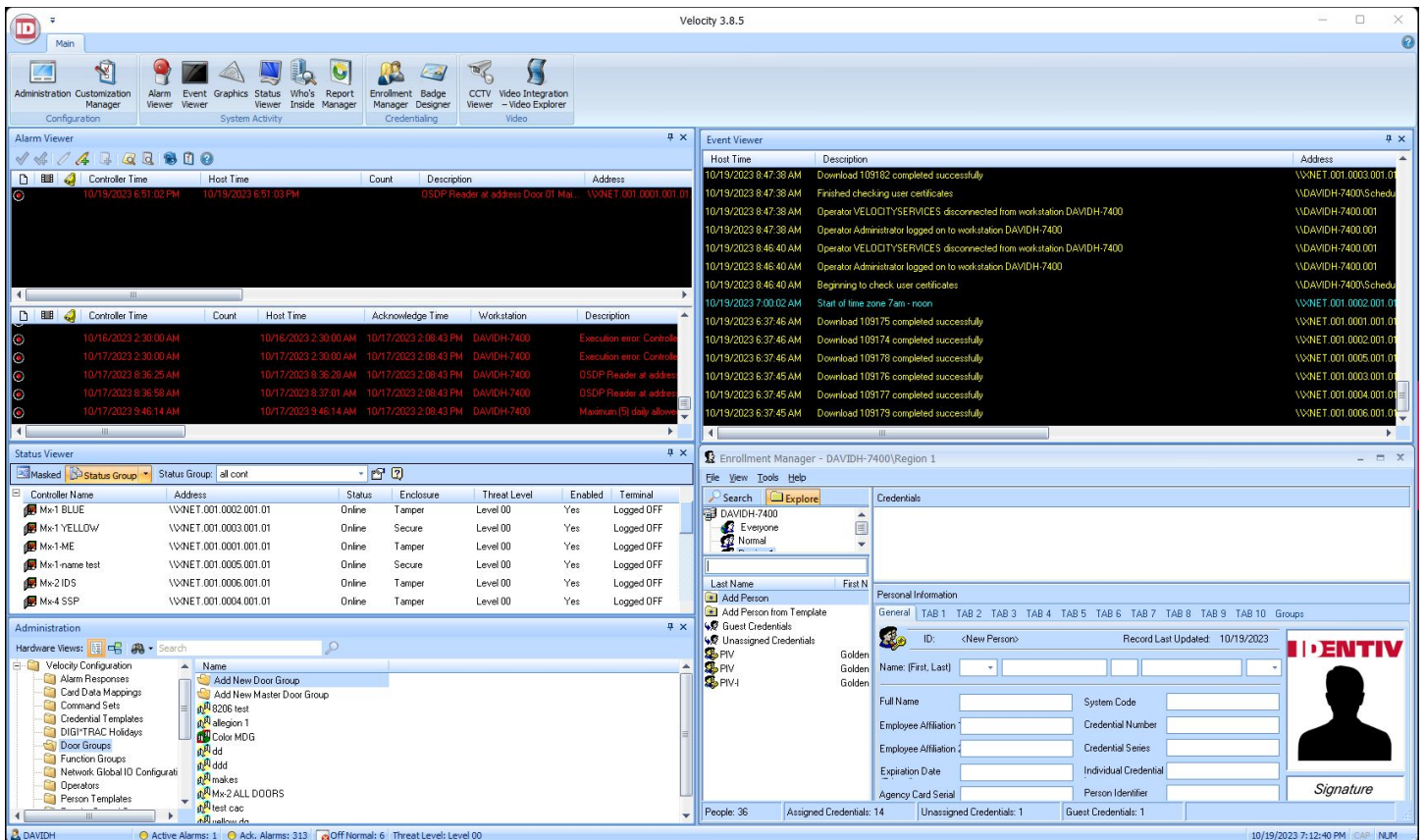


Figure 2: Velocity Security Management Console

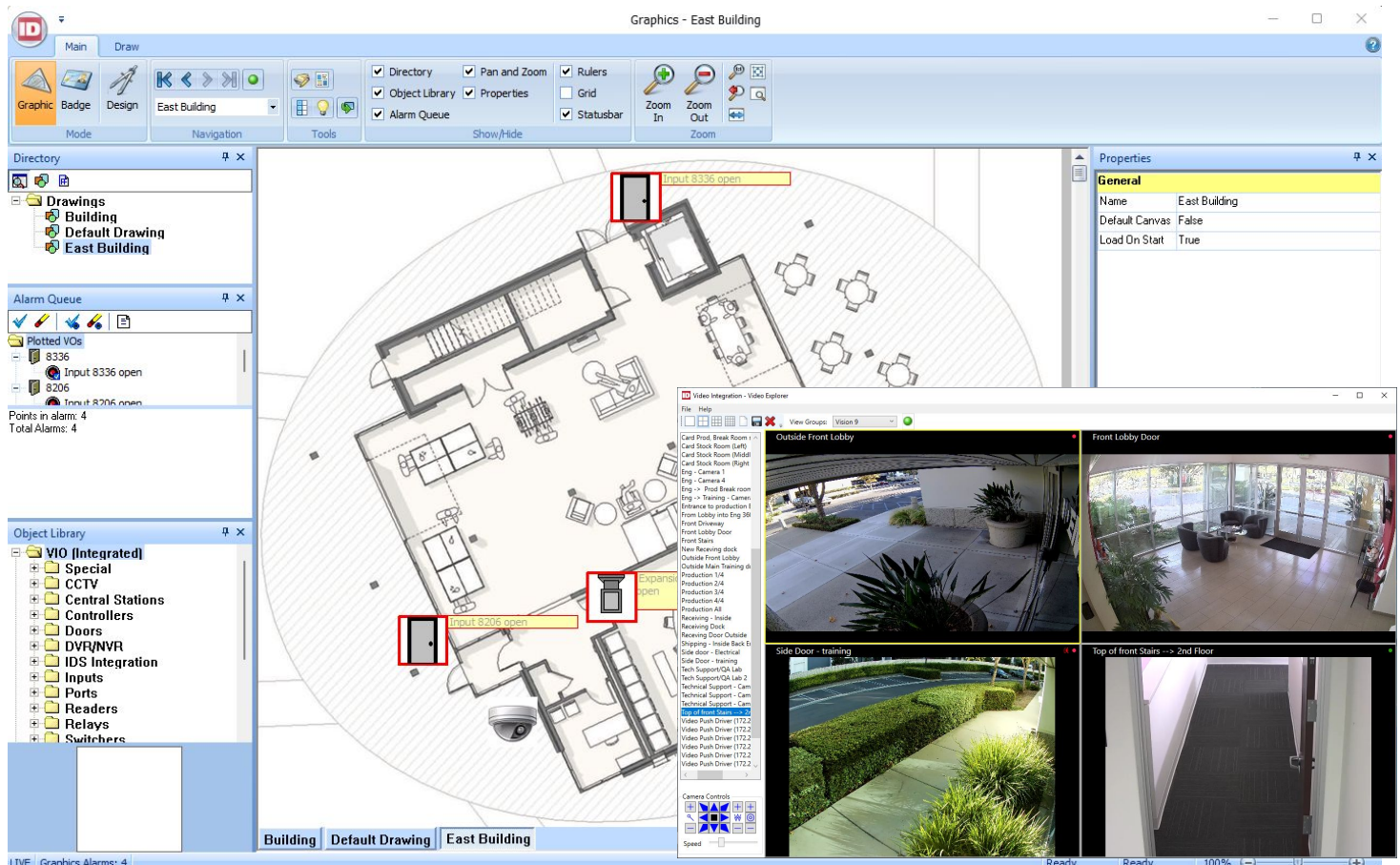


Figure 3: Velocity Security Management Graphics and Video

UI Core Features

Feature	Description
Administration	Contains Velocity, controllers, and interfaces configuration tools
Alarm Viewer	Monitor and acknowledge active system alarms, such as Forced Entry, DOTL (door open too long), and many more
Command and Control	Command Sets, Global I/O events, Threat Level management, and Control Zone management for sophisticated security solutions
Graphics	Provide a visual interface for door status, alarms, and links to video feeds
Event Viewer	View system events as they occur with as much granularity as desired
Enrollment Manager	A comprehensive enrollment tool for managing individuals, groups, and their credentials
Badging Design	Design and control the issuance of credentials from within the Velocity environment
Report Manager	Choose from 75 default reports or create your own; export in wide variety of formats
Velocity Web Services Client	Access information and control systems via a web link; optimized for chrome-based browsers
Who's Inside	Monitor the personnel in a given building or floor; ideal for managing emergency egress/mustering
Customization Manager	Customize alarms, events, notes, messages, and field titles for system specific behavior
Status Viewer	Review the status of all hardware connected to a system, including doors, inputs, relays, controllers, and more
Scheduling Agent	Schedule a wide range of system tasks, like deactivating credentials, running logs, printing reports, or executing command sets
Trigger Action Manager	Pair an action to an event (i.e., associate an alarm with a video camera)
Roles and Operators	Granular role permissions based on operator functions and restrictions
Video Integrations	Associate doors with cameras, view video with the built-in video viewer, launch from active alarm, graphics module, or the viewer
IDS Integrations	Allows control of supported intrusion system's arming status by area or for the entire installation. The system also allows for points be bypassed, while also giving users the ability to trigger outputs tied into the intrusion system

Velocity Part Numbers

Part Number	Description
VEL-EXPRESS	Velocity Software License - Express edition. Provides support for 32 modules, 1 workstation and application features. One license required per Velocity Express 3.7 or higher. Optional Velocity Plug-ins not supported. First year SSA (Software Support Agreement) required, not included.
SSA-VEL-EXPRESS	Velocity Express Software Support Agreement - 1 Year.*
VEL-SERVER	Velocity Software License - Server edition. Provides support of 64 modules, 10 thick client connections and application features. One license required per Velocity Server 3.7 or higher. First year SSA (Software Support Agreement) required, not included.
SSA-VEL-SERVER	Velocity Server Software Support Agreement - 1 Year.*
MOD-ADD-16	Velocity security management application software, Server edition. Additional 16 Modules. Requires VEL-SERVER. First year SSA (Software Support Agreement) required, not included.
SSA-MOD-16	Velocity Server security management application maintenance - 1 Year service for support of additional 16 modules.*
MOD-ADD-128	Velocity security management application software, Server edition. Additional 128 Modules. Requires VEL-SERVER. First year SSA (Software Support Agreement) required, not included.
SSA-MOD-128	Velocity Server security management application maintenance - 1 Year service for support of additional 128 modules.*
MOD-ADD-512	Velocity security management application software, Server edition. Additional 512 Modules. Requires VEL-SERVER. First year SSA (Software Support Agreement) required, not included.
SSA-MOD-512	Velocity Server security management application maintenance - 1 Year service for support of additional 512 modules.*
MOD-ADD-1024	Velocity security management application software, Server edition. Additional 1024 Modules. Requires VEL-SERVER. First year SSA (Software Support Agreement) required, not included.
SSA-MOD-1024	Velocity Server security management application maintenance - 1 Year service for support of additional 1024 modules.*
CLIENT-ADD-5	Velocity security management application software, Server edition. Additional 5 Thick Clients. Requires VEL-SERVER. First year SSA (Software Support Agreement) required, not included.
SSA-CLIENT-5	Velocity Server security management application maintenance - 1 Year service for support of additional 5 thick clients.*

*One Month, 3 Year and 5 Year options available.

Wireless Lock Part Numbers

Part number	Description
MX-1-W	Velocity security management application software license. For Mx-1 only, adds 8 wireless locks, counts against module license. First year SSA (Software Support Agreement) required, not included.
SSA-MX-1-W	Velocity Mx-1, 8 wireless locks Software Support Agreement - 1 Year.*

*One Month, 3 Year and 5 Year options available.

Optional Velocity Licenses

Part Number	Description
VEL-VCCS	Velocity Certificate Checking Service plug-in license. For support of PIV/CAC/TWIC certificate checking. Requires VELFED100/250 for FICAM compliance, GSA APL #10103. One license required per Velocity Server 3.7 or higher. First year SSA (Software Support Agreement) required, not included.
VEL-VMS-VV-PLUGIN	Velocity integration for Velocity Vision Video Management System plug-in license. First year SSA (Software Support Agreement) required, not included.
VEL-3VR-PLUGIN	Velocity integration for 3VR plug-in license. First year SSA (Software Support Agreement) required, not included.
VEL-VMS-BOSCH-PLUGIN	Velocity integration for Bosch Video Management System plug-in license. First year SSA (Software Support Agreement) required, not included.
VEL-EXACQ-PLUGIN	Velocity integration for Exacq plug-in license. First year SSA (Software Support Agreement) required, not included.
VEL-AD-PLUGIN	Velocity integration for American Dynamics plug-in license. First year SSA (Software Support Agreement) required, not included.
VEL-VSM-PLUGIN	Velocity integration for Cisco VSM plug-in license. First year SSA (Software Support Agreement) required, not included.
VEL-VMS-MS-PLUGIN	Velocity integration for Bosch Video Management System plug-in license. First year SSA (Software Support Agreement) required, not included.
VEL-CUCM-PLUGIN	Velocity integration for Cisco Unified Call Manager plug-in license. First year SSA (Software Support Agreement) required, not included.
VEL-IDS-BOSCH-PLUGIN	Velocity integration for Bosch Video Management System plug-in license. First year SSA (Software Support Agreement) required, not included.
VEL-IDS-DMP-PLUGIN	Velocity integration for DMP Intrusion Detection System plug-in license. First year SSA (Software Support Agreement) required, not included.

Notes: Optional plugins are not supported on VEL-EXPRESS
 Contact sales@identiv.com with version compatibility questions
 See Velocity VMS Datasheet for full Plugin Data.
 See Bosch/DMP IDS Integration sheets for IDS integration information.

Identiv Global Services

Velocity’s powerful SDK enables several types of systems to integrate with Velocity such as HR, IDMS, Key Management, URL Triggers, SIEMS, PSIMs, and others. Contact sales@identiv.com for the latest information on integration options, or to get further details on Identiv’s .NET SDK.

Velocity seamlessly bridges physical access and IT infrastructures in a powerful and easy-to-use security management solution that scales from single-user applications to enterprise-class environments, connecting hundreds of doors and desktops for thousands of users. Utilized by IT, security, facility management, and guard personnel in commercial, governmental, and educational institutions worldwide. Velocity integrates access control, intrusion detection, video surveillance and recording, photo ID badging, smart cards, biometrics, and interoperability with other building and business systems.